



# Art Reach

is an inclusive member-led arts service. Art Reach offers opportunities for learning-disabled adults in Central Scotland to access a high-quality programme of participatory art projects.

## Summer 2023 Report





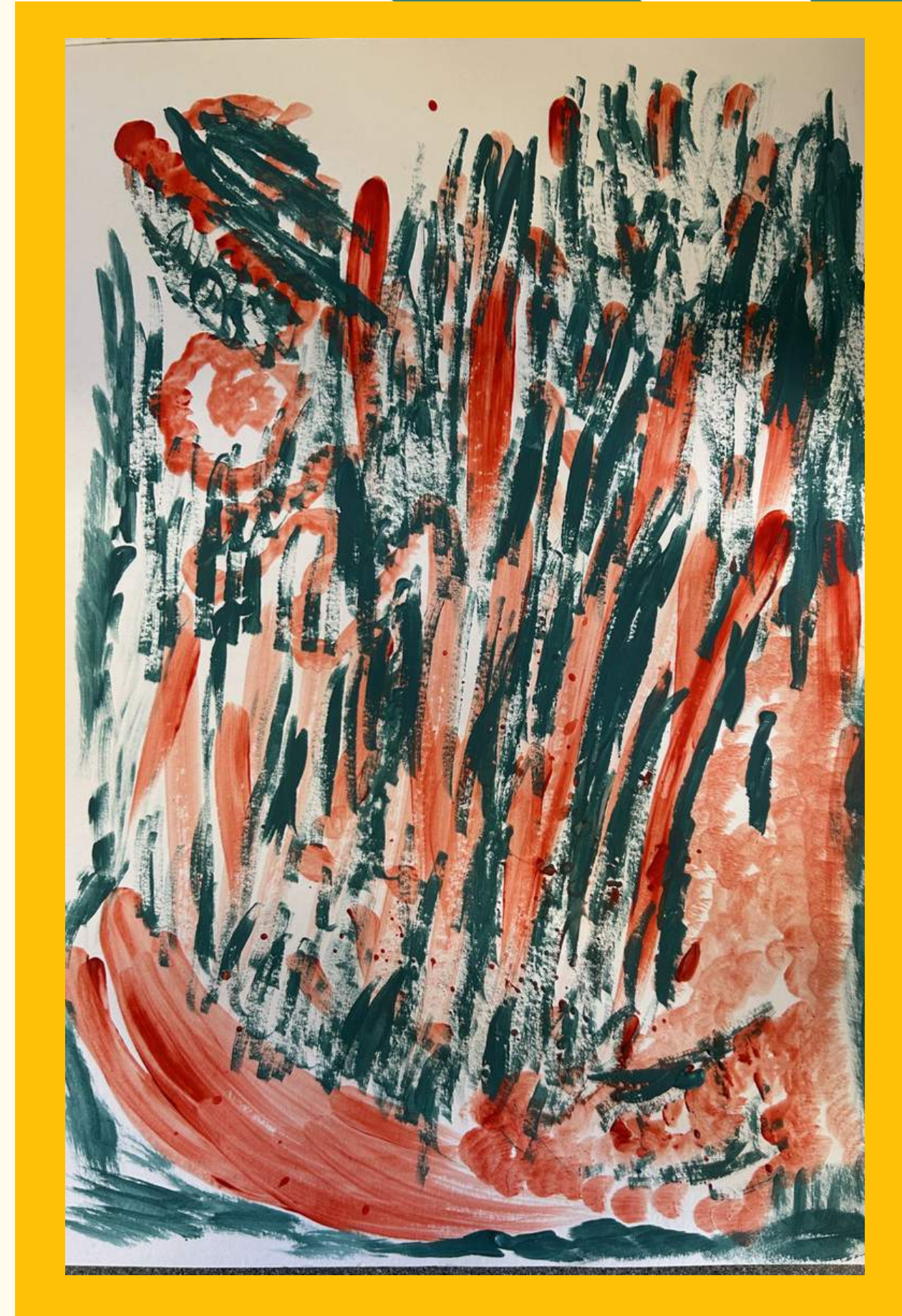
# Agenda

Project Overview

2023 Activities & Outcomes

Future Plans

Painting by Paul Bridgeman -  
Art Reach Sound & Vision Workshops







# Project Overview



In 2010 Art Reach was created to inspire, develop and showcase the artistic talents of learning disabled adults in Stirling and the surrounding areas. Art Reach projects are designed in conjunction with participants and we take a holistic and multi-disciplinary approach to creative activities, facilitating workshops that encompass visual arts, sound, video, movement, music and performance.

We are committed to celebrating ambitious and bold art made by learning disabled artists and do so by sharing creative spaces, collaborating, learning from one another and making together. By undertaking collaborative practice we facilitate artistic achievements, as well as encouraging social interaction, communication and connection.



A DAY OF ART, SOUND AND MOVEMENT AT THE COWANE CENTRE

# ART REACH OPEN DAY



PLEASE JOIN US AS WE RELAUNCH ART REACH, A MEMBERS-LED ART COLLECTIVE FOR LEARNING DISABLED ARTISTS.

FILM SCREENINGS FROM THE ART REACH ARCHIVES!

A FREE ART WORKSHOP EXPLORING THE COWANE CENTRE THROUGH PAINT AND MOVEMENT!

ART CHATS AND SOCIAL TIMES!

LUNCH AND REFRESHMENTS!

SIGN UP VIA EMAIL- [INFO@ARTLINKCENTRAL.ORG](mailto:INFO@ARTLINKCENTRAL.ORG)

WEDNESDAY 3RD MAY - 10AM - 3PM

THE COWANE CENTRE - 69 COWANE ST, STIRLING FK8 1JP

# 2023 Outcomes

Previous facilitator, Sharon Quigley, maintained a strong connection with Art Reach participants throughout Covid-19 lockdowns, arranging weekly Zoom sessions & providing creative materials and prompts in the form of Art Reach creative kits. In response to conversations with Art Reach participants, their families and support, these kits were designed to get recipients outside to look more closely at the environment and take inspiration from the natural world. Kits were seasonally themed and included different art materials for each phase.

On 3rd May 2023, an Art Reach Open Day brought participants together in the person for the first time since Covid-19 restrictions were lifted. This took place at The Cowane Centre and was facilitated and led by Art Reach artist, Andrew Auld, alongside Kevin Harrison and Hazel Ritchie. During the event we had a film screening of seven short films showcasing previous Art Reach projects, a relaxed workshop including mindfulness, movement and drawing and conversations with participants about their vision for the future of the project. The open day was a fantastic opportunity for our artists to reconnect in a physical creative space.



# Art Reach Open Day





# SOUND & VISION

An Artreach Project

June 27th - July 11th - July 25th 12-3



The Cowane Centre, Stirling



Exploring space and place through paint,  
movement, music, sounds and mess!

# Sound & Vision



Sound & Vision was a series of 3 workshops at The Cowane Centre in Stirling, taking place in June and July 2023.

Each workshop began with a guided meditation and movement exercise, followed with tea and conversation. Throughout this block of workshops we used visual arts and sound in a reflexive and responsive way - responding to music with visual art and making sounds to compliment our visual pieces. The workshops were designed in a flexible and open fashion to allow for new lines of inquiry to emerge from participants.

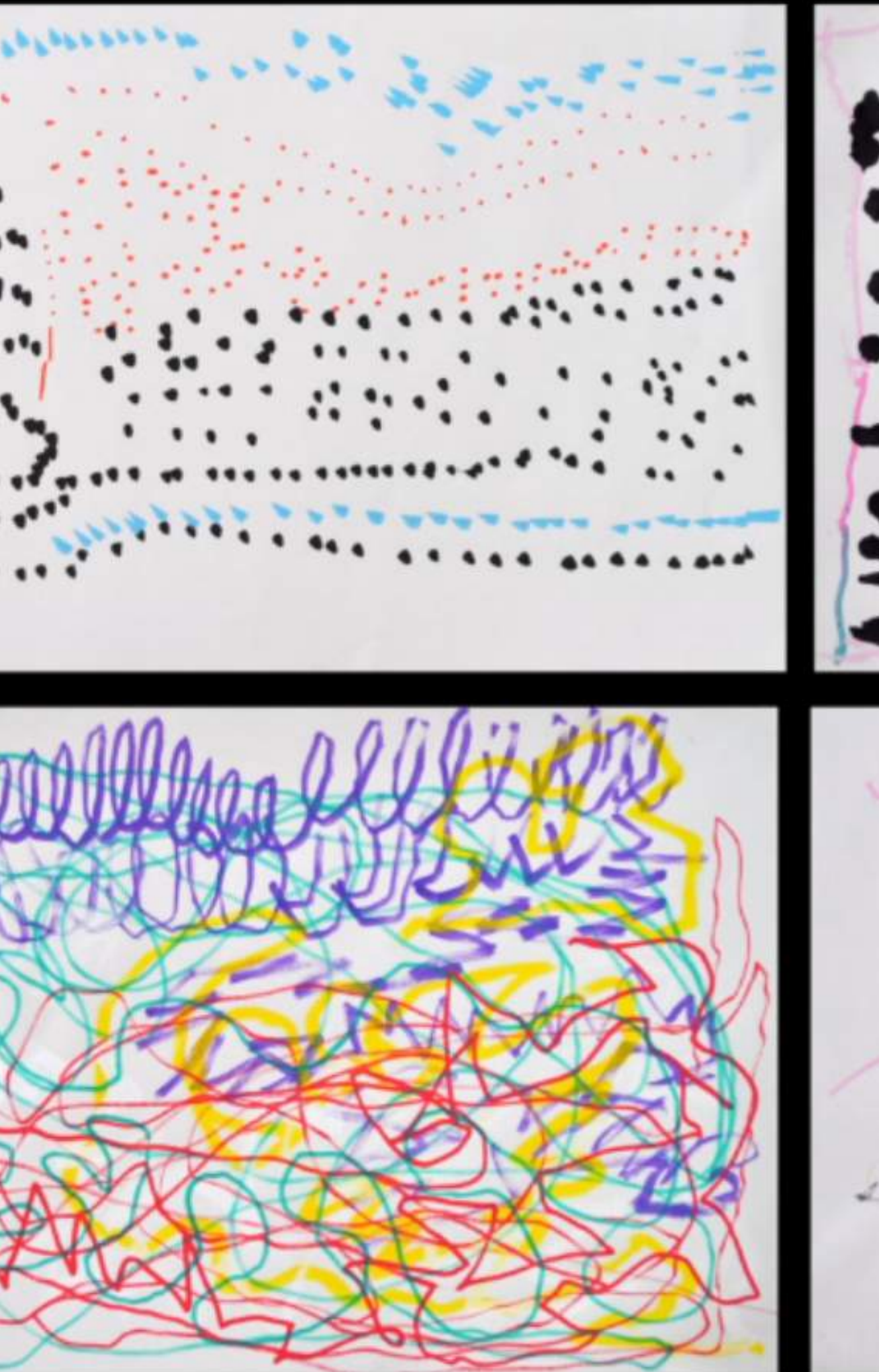
Participants painted visual representations of different types of music & sounds, created soundscapes using Garageband (often utilising paintbrushes & other art materials as sound-making tools), sang songs, drew stages for performers and developed their individual art practices.



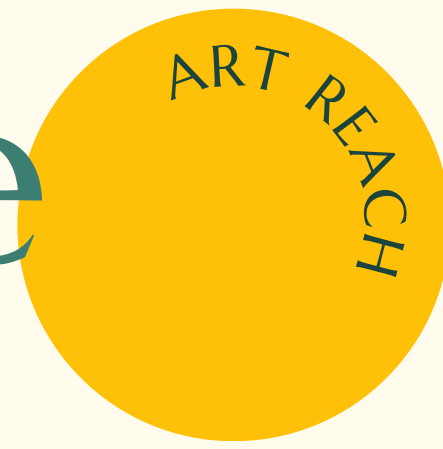
# Sound & Vision







# Future Plans



We look forward to programming regular workshops, activities and events for participants throughout 2023/2024. One priority is reaching a wider range of participants by reconnecting with local organisations, such as Enable Stirling, Forth Valley College, NHS Forth Valley and others, to identify suitable participants to join.

Some who were part of the group prior to the Covid-19 pandemic are no longer able to join us, due to changing support allocations, ill-health, other commitments or health vulnerabilities that preclude group activities. Due to fluctuating group numbers it feels an appropriate time to refocus on engaging new participants throughout September.

We will host two blocks of workshops at The Cowane Centre in Autumn/Winter 2023 - the next will focus on printmaking & collage, the following on video art & prop-making. These ideas have been generated with the artists, utilising feedback and conversations from our open day to ensure the programme remains user-led.

We have a March 2024 residency in The Pathfoot Building in Stirling University, an opportunity for the artists to make work responding to a space with an inspiring art collection, numerous significant sculptural works and striking modernist buildings.





# Future Plans



Following this, our final priority (alongside engaging new participants, strengthening bonds with other organisations and continuing our workshop programme) is to be ambitious about opportunities for sharing participants work and providing opportunities for participants to engage with the wider art world. Through engaging with mainstream cultural institutions, sharing creative output in printed materials and exhibitions and visiting galleries, we hope to highlight the creative excellence of learning disabled artists.

We are developing partnerships with cultural organisations across Central Scotland and the rest of the UK, seeking opportunities to share participants work and look forward to challenging the expectations and restrictions of mainstream cultural creative spaces.

Our return to in-person workshops has been a great success and participants have reported a renewed interest in making art. We are greatly enjoying the opportunities for connection, laughter and highlighting the excellence of learning disabled artists.





# Art Reach

is an inclusive member-led arts service. Art Reach offers opportunities for learning-disabled adults in Central Scotland to access a high-quality programme of participatory art projects.

Artreach has been supported by

the Gordon Fraser Charitable Trust  
and

National Lottery Awards For All Scotland



Gordon Fraser  
Charitable Trust



AWARDS  
FOR ALL  
SCOTLAND